

# Magic, machines and the mess we're in

C3



**C3**

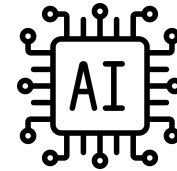
**Hello, I'm Tom**

I spend most of my days prompting machines how to think

**In real talk that means;**

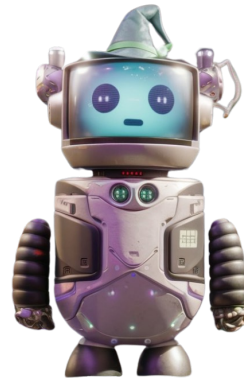


Part of Connective's  
innovation lab



Introduced AI natively to a multi-  
million pound agency

That AI is called **Merlin**



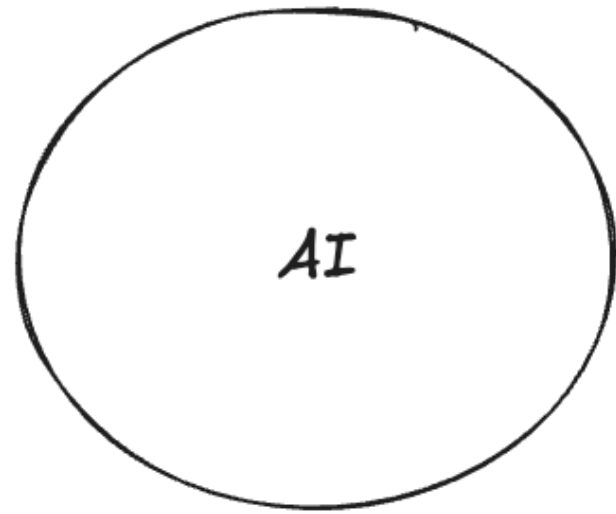
(today I'm talking about what we learnt launching him)

**C3**

# The mess



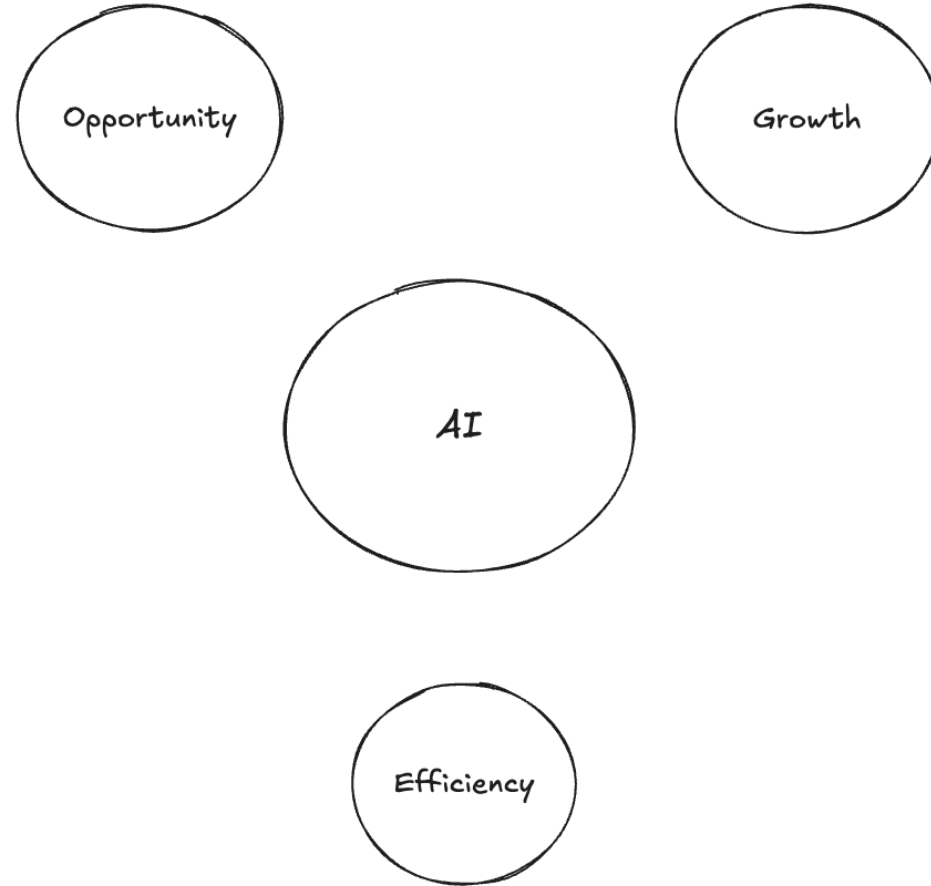
**The world is moving too fast**



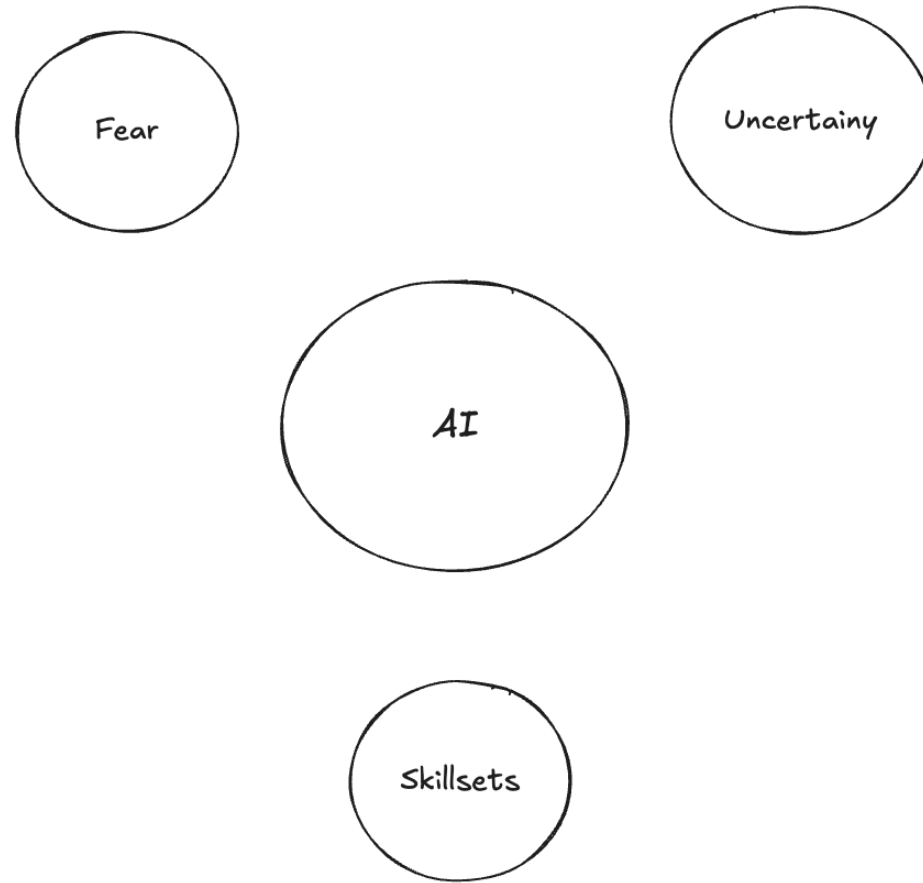
**AI is no longer a nice to have**

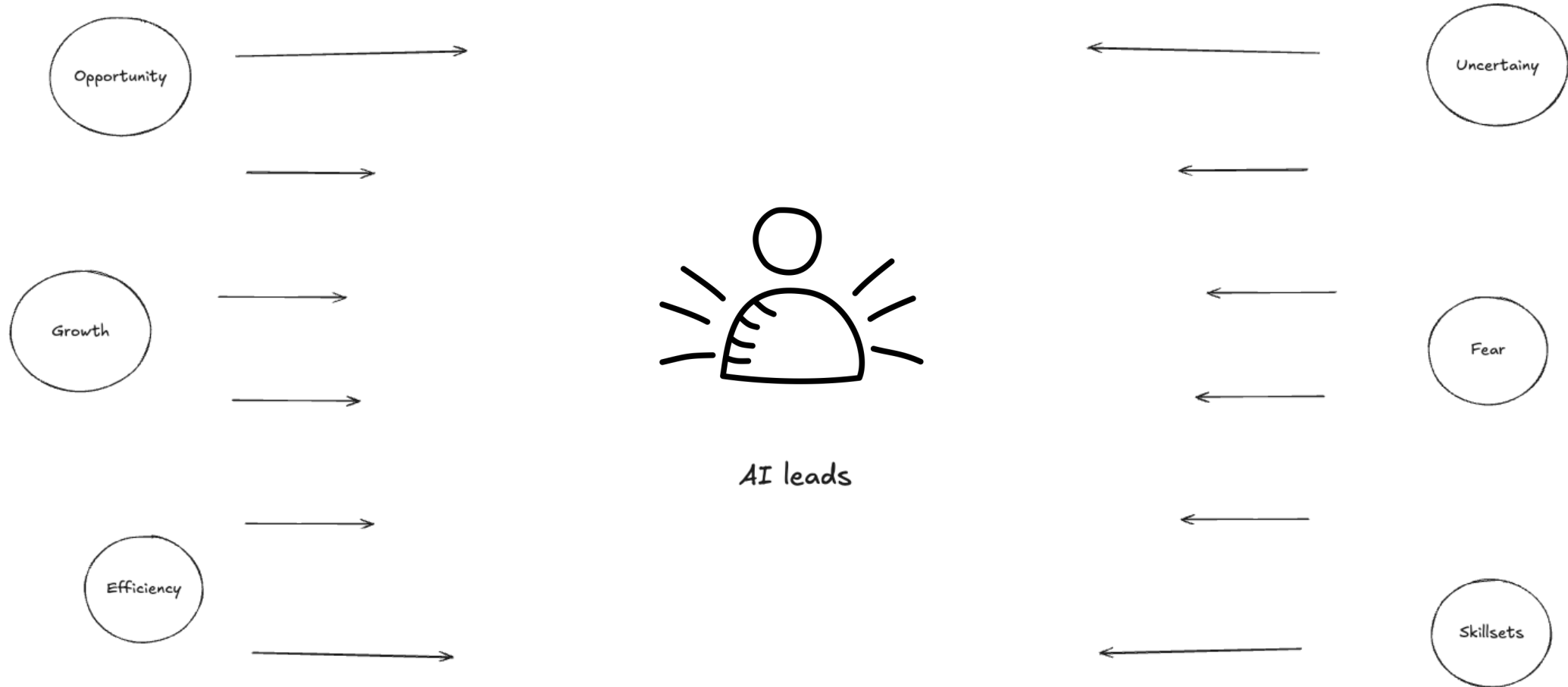


## Clients and investors see AI as the **golden ticket**

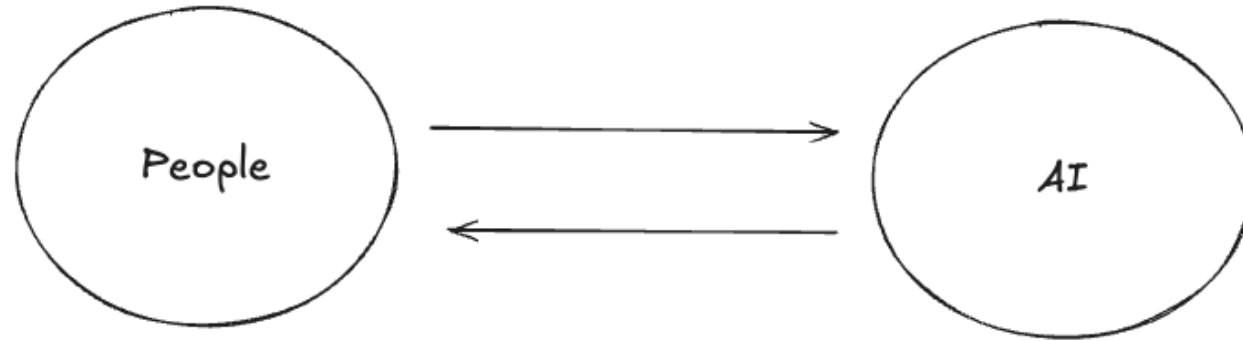


However, others see a different image





Our focus is bringing AI and people together



...which is really f\*cking hard

# The challenge

Adapting to AI at speed and not losing people on the way

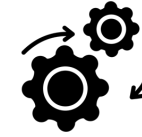
**C3**

# The machine

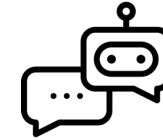
**AI is a foundational technology, like electricity**

# When we talk about AI, we typically mean...

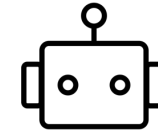
Standard automation



AI Chatbots  
(Conversational AI)



AI agents  
(Task agents)



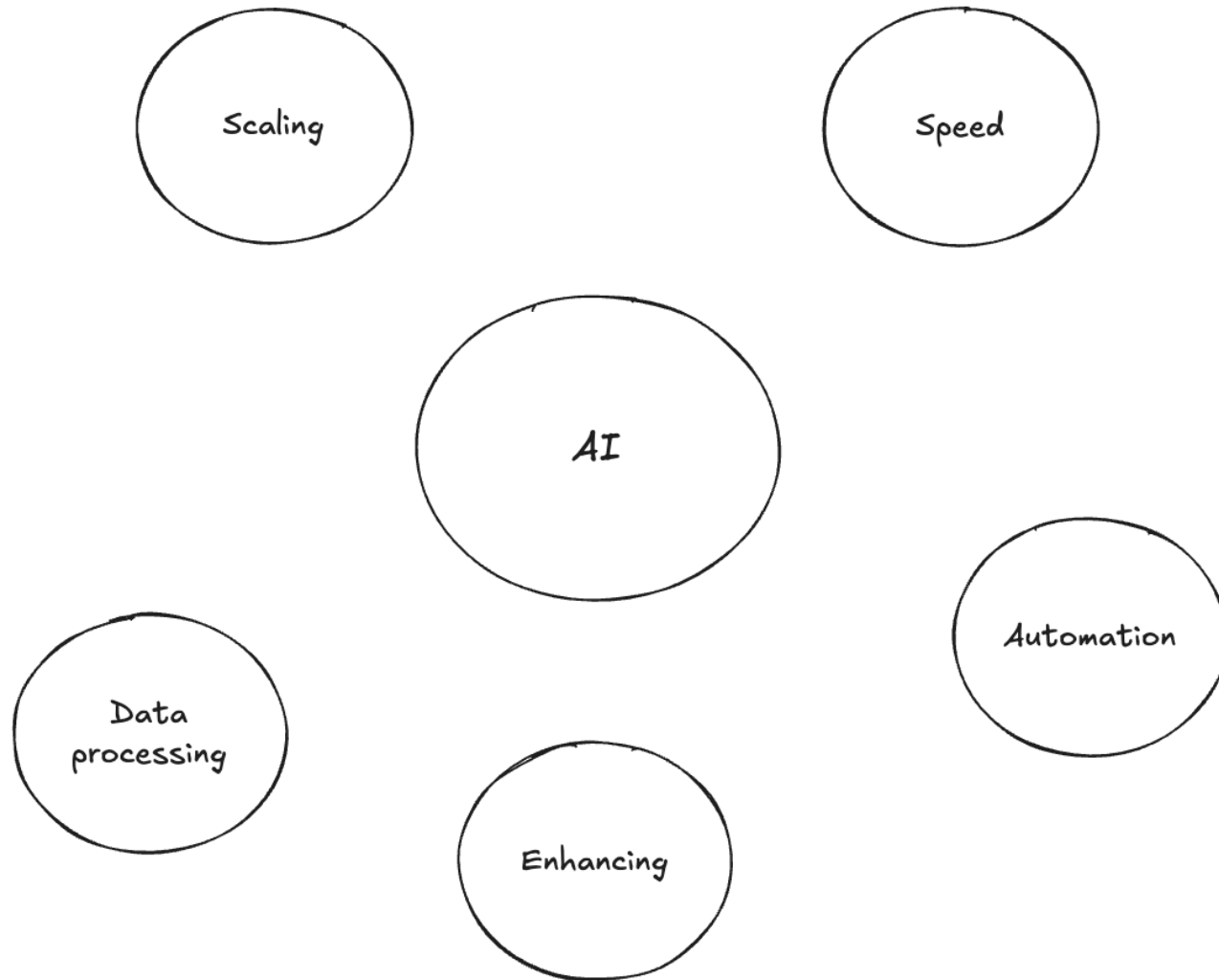
Multi-agent systems  
(MAS)



Human operators  
(Human in the loop systems)





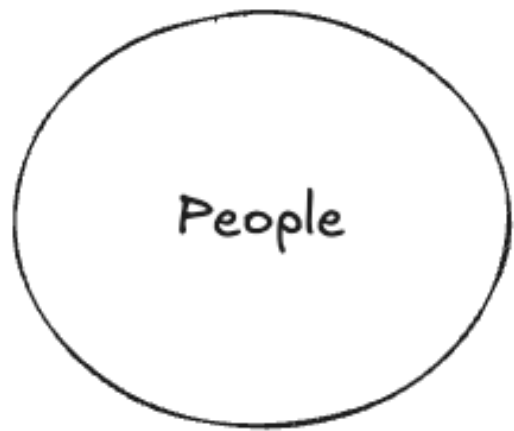


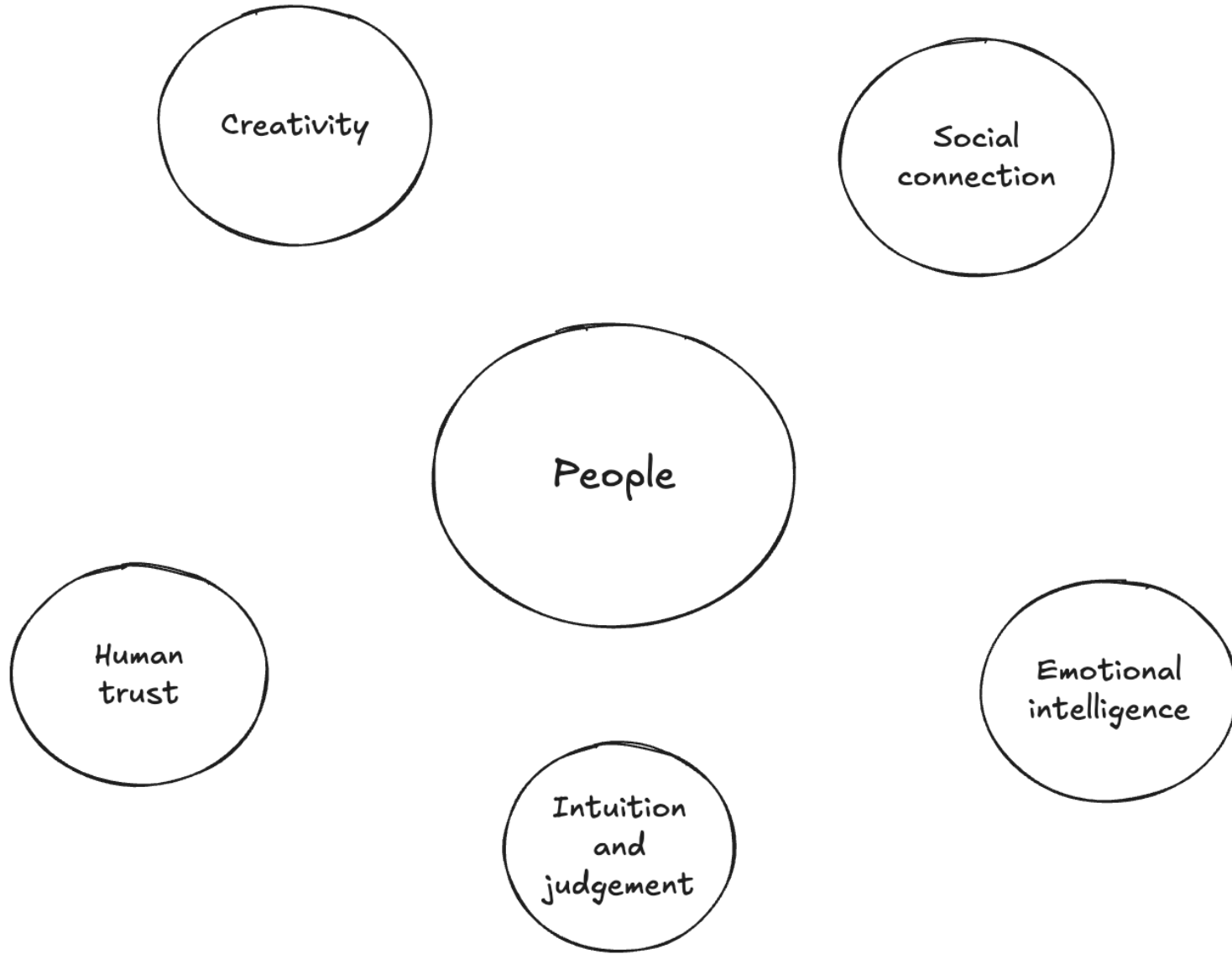
**Getting things done faster with more insight**

**C3**

# The magic







Creativity

Social  
connection

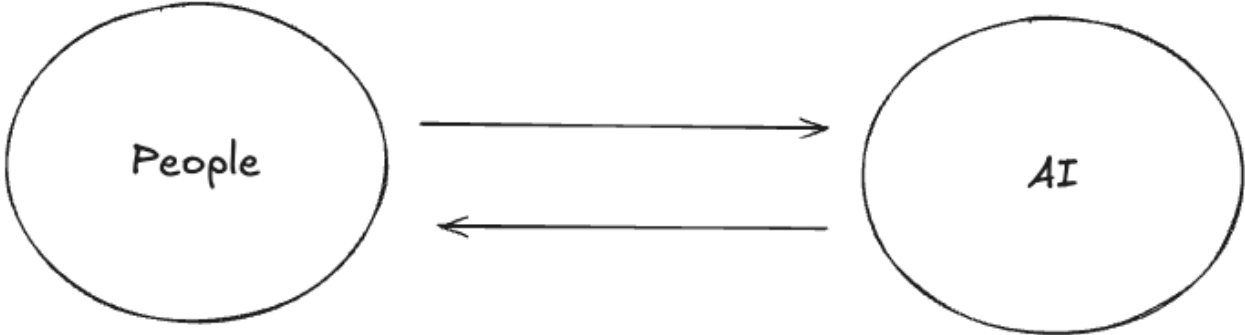
People

Human  
trust

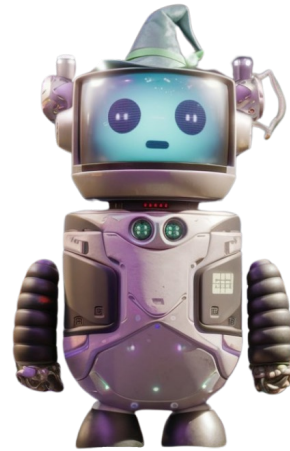
Emotional  
intelligence

Intuition  
and  
judgement

When AI and people work together, this magic is amplified



**Merlin** connects our entire team to C3's collective experience in seconds



This allows our team to spend less time on finding data and more time on **human magic**

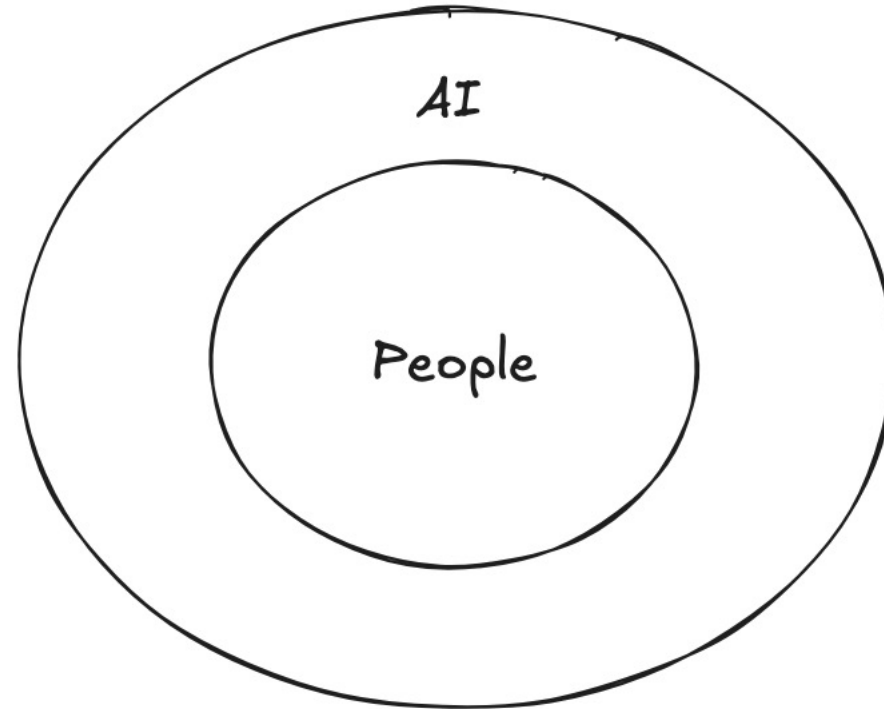
**C3**

**Here's what we  
learnt**



**Keep humans in control**

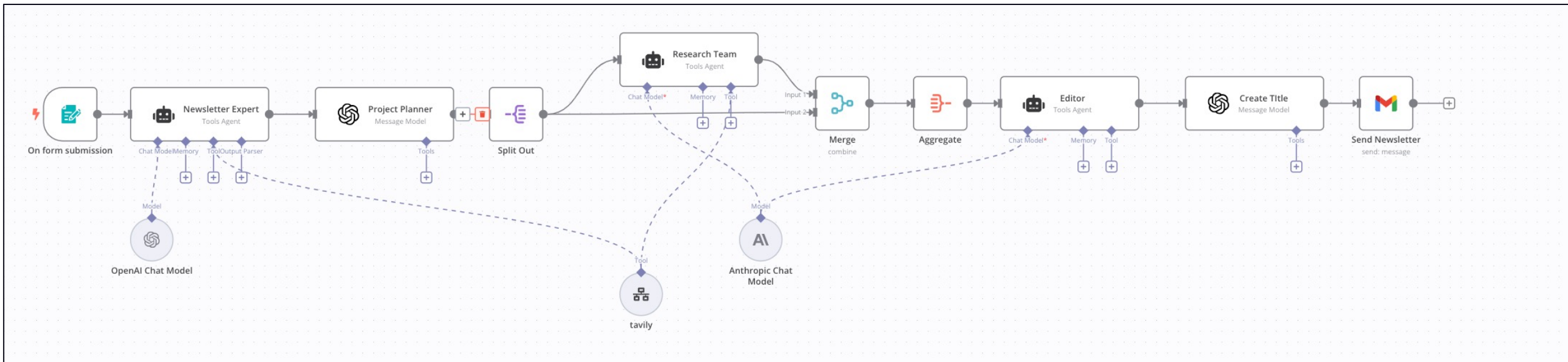
You need to build AI around people like a suit of armor



This means they're always at the heart and in control

**Integrate transparently**

# Multi agent system (MAS) example



Evolve at the rate of **humans**, not technology

First homo sapiens



2.5  
Million years

Human complex language



70,000  
years

Present

Birth of AI



70  
years

Large language models (ChatGPT)



5  
years

Present



## When in doubt, follow the 10/20/70 value rule

**10%**

of value is from the  
algorithm of the tech

**20%**

of value is when the  
tech is foolproof

**70%**

of value is when you  
change the hearts  
and minds of the  
user

*...that 70 percent is often under-invested in.*

When we get this right, magic +  
machine equals **limitless human  
potential**



**CONNECTIVE3**

Thank you



Let's connect on LinkedIn



Tom Lanaway

tom.lanaway@connective3.com

